

Sample Received: **June 19, 2026**

COA Issued: **June 25, 2026**

## PRODUCT INFORMATION

Vendor: <b>American Peptides</b>	Sample Name: <b>KLOW Blend 80mg</b>	Sample Type: <b>Blue lyophilized powder</b>	Lot Number: <b>KLOW80-0616</b>	MW (g/mol): <b>342.4, 403.2, 1419.5, 4964.2</b>
-------------------------------------	--	--	-----------------------------------	--

## ANALYTICAL METHODS

**Identity:** Confirmed via MALDI-MS

**Purity:** RP-HPLC (214 nm)

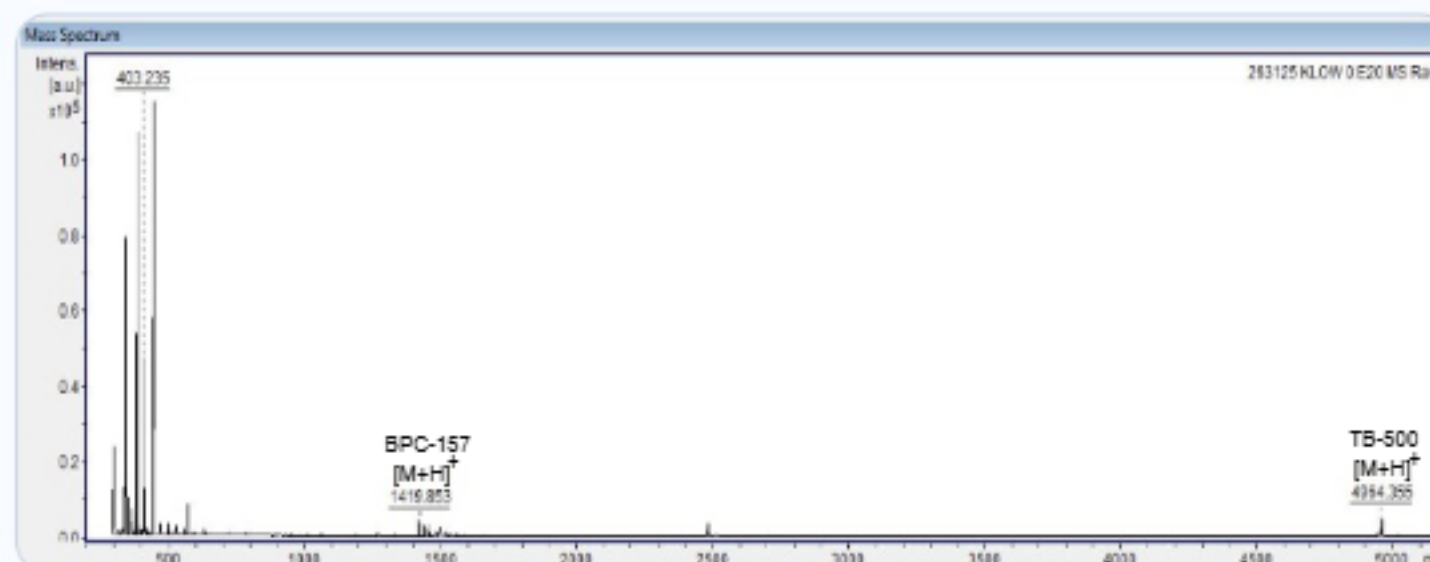
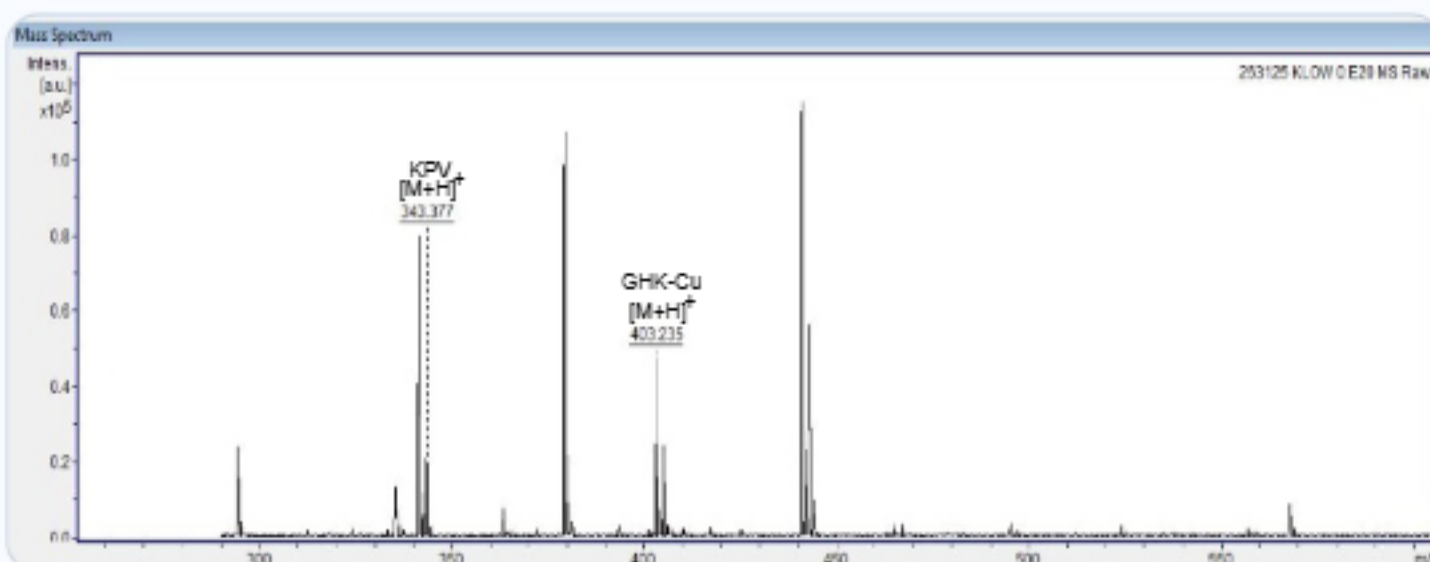
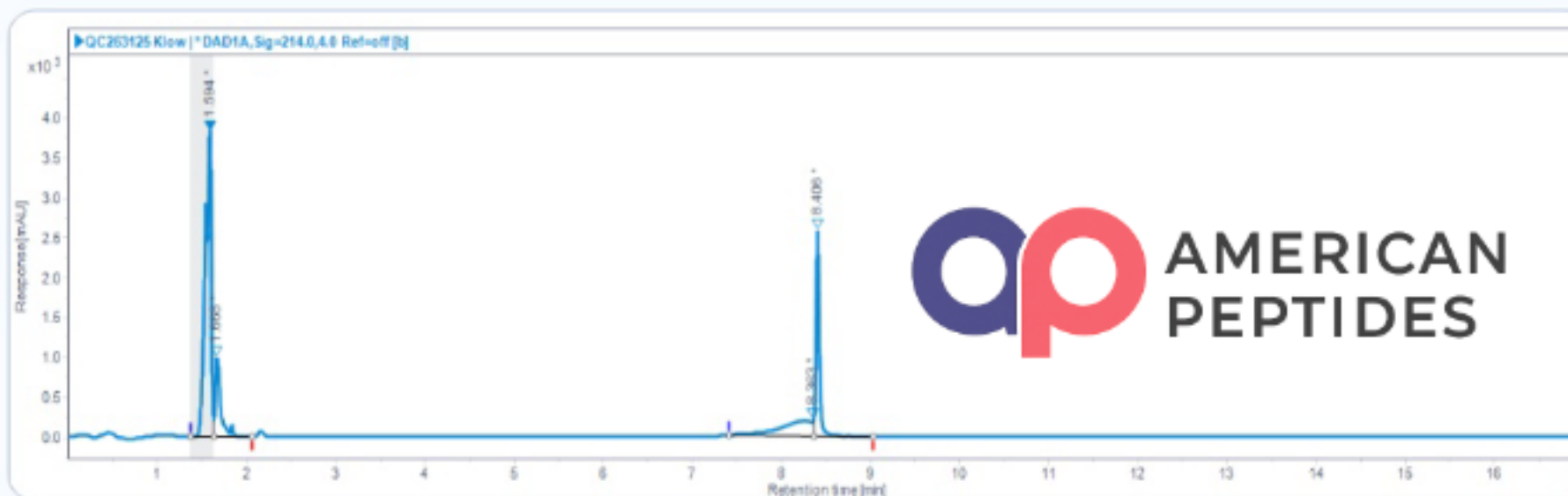
**Content:** HPLC quantitation

## TEST RESULTS

Specification	Result	Method	Status
Identity: KLOW Blend	KPV, GHK-Cu, BPC-157, TB-500	MALDI-MS	✓ Conforms
Content	10.27, 50.86, 10.32, 10.49 mg	HPLC Quantitation	✓ Conforms
Overall Purity	99.9%	RP-HPLC (214 nm)	✓ Conforms
Heavy Metals	<0.01 ppm	<USP232>	✓ Conforms
Endotoxin	<0.05 EU/mL	<USP85>	✓ Conforms

## ANALYTICAL DATA

### HPLC Chromatogram (Retention Time: 1.594, 1.668, 8.363, 8.406 min)



**Certification:** This COA confirms that the tested material meets or exceeds Bioviridian's analytical quality specifications for peptide research use.

Visit: <https://bioviridians.com/coa-search.html>



*Shane Straight*  
**Shane Straight, M.S.**  
 Principal Chemist, Bioviridian Inc.